



**DECEMBER**

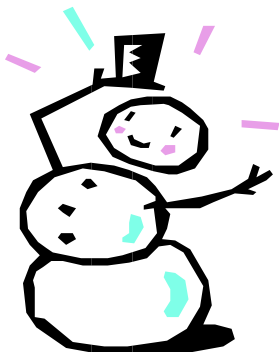
## Local Food Pantries

If you are in need of food, please contact your local food pantry for distribution and food orders.

The Athens Food Pantry is open the third Saturday of each month. Please call to register with Linda Pedigo at 341-1894.

For Greenview residents, please contact Sharon Davis at the Greenview Food Pantry at 968-5437 OR 968-5323

All Petersburg/Oakford/Tallula residents are welcome to use the Petersburg Food Pantry once every 60 days, located at the Presbyterian Church. Please stop by the MCHA office on Tuesdays or Thursdays to receive a voucher beforehand.



## Education Assistance Grant

The Central Illinois Council of the Illinois Association of Housing Authorities has elected to implement an Education Assistance Grant Program. The program will be administered by Central Council. The money may be used for tuition, books, approved activity fees, necessities, or work programs and other items at the discretion of the sponsoring council. The deadline for receipt of application materials is January 17, 2019. For the application and grant rules, please call the Menard County Housing Authority at 217-632-7723.

### Hours of Operation

- ◆ Give & Take will be open

January 12th

January 26th

February 9th

February 23rd

weather permitting.

- ◆ Menard County Housing Authority will be CLOSED December 24th, December 25th, and January 1st.

The staff at MCHA wishes you a very happy holiday season!

**We're on the web!**  
**Www.menardcha.org**

## **Lunch & Learn Dates**

**Tuesday, January 29** - Navigating Senior Care Transitions

**Tuesday, February 26** - Social Isolation

**Tuesday, March 26** - Mindfulness

All classes will be held starting at Noon at 113 West Antle Street in Petersburg. Please pre-register to ensure there is enough food for everyone. To register, please contact the Area Agency on Aging for Lincolnland at 217-787-9234 or 800-252-2918.

## **Friendly Reminders**

- ◇ Any changes in phone numbers need to be reported to the MCHA office as soon as possible.
- ◇ Please call to schedule an appointment with a staff member if needing to meet with them.

## **Common Lease Violations (that result in possible eviction)**

- ◇ Non-payment of rent
- ◇ Poor housekeeping habits
  - ◇ Unapproved pets
- ◇ Unapproved long-term visitors

